

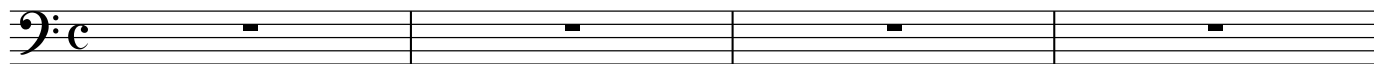
# 紅葉 (Momiji)

for bass

♩=92

Intro

F $\Delta$ 7 G Am7 C/E F $\Delta$ 7 G C(sus4) C



5 F $\Delta$ 7 G Am7 C/E F $\Delta$ 7 G C(sus4) C



1A

9 F $\Delta$ 7 E7 Am7 C/G F $\Delta$ 7 E7 Am7 D/F#



13 F $\Delta$ 7 E7 Am7 C/G F $\Delta$ 7 E7 Dm7 C/E F F/G



1B

17 C Gm/C F#7 F $\Delta$ 7 C/E Dm7 F/G G#°

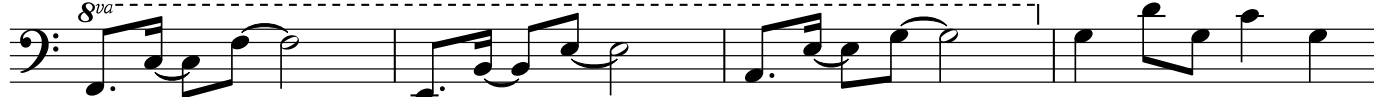


21 Am7 C E°/F# F C/E Dm7 F/G



Inter

25 F $\Delta$ 7 D°/E Am7 Gm7 C7



29



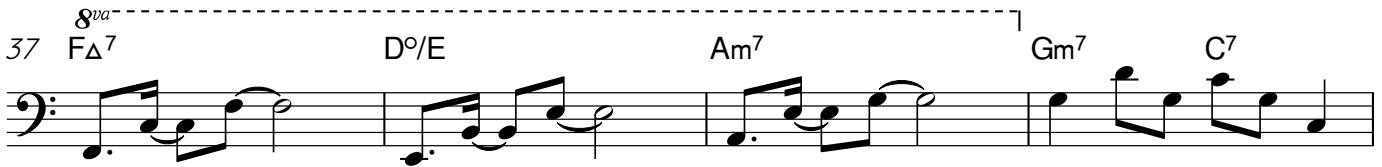
2 2A

33

**4**



37 <sup>8va-</sup> F $\Delta$ <sup>7</sup> D $^{\circ}$ /E Am<sup>7</sup> Gm<sup>7</sup> C<sup>7</sup>




2B

41 F $\Delta$ <sup>7</sup> D $^{\circ}$ /E Am<sup>7</sup> Gm<sup>7</sup> C<sup>7</sup>

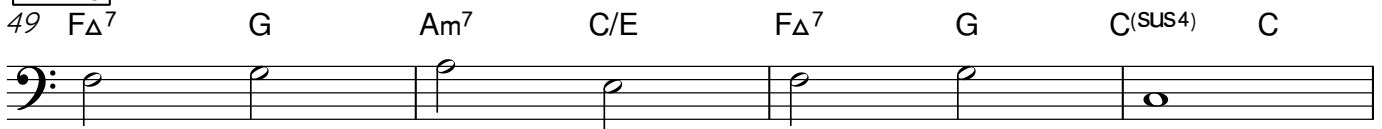


45 F $\Delta$ <sup>7</sup> D $^{\circ}$ /E Dm<sup>7</sup> C/E F $\Delta$ <sup>7</sup> F/G



Ending

49 F $\Delta$ <sup>7</sup> G Am<sup>7</sup> C/E F $\Delta$ <sup>7</sup> G C(SUS4) C



53 F $\Delta$ <sup>7</sup> G Am<sup>7</sup> C/E F $\Delta$ <sup>7</sup> G C(SUS4) C

